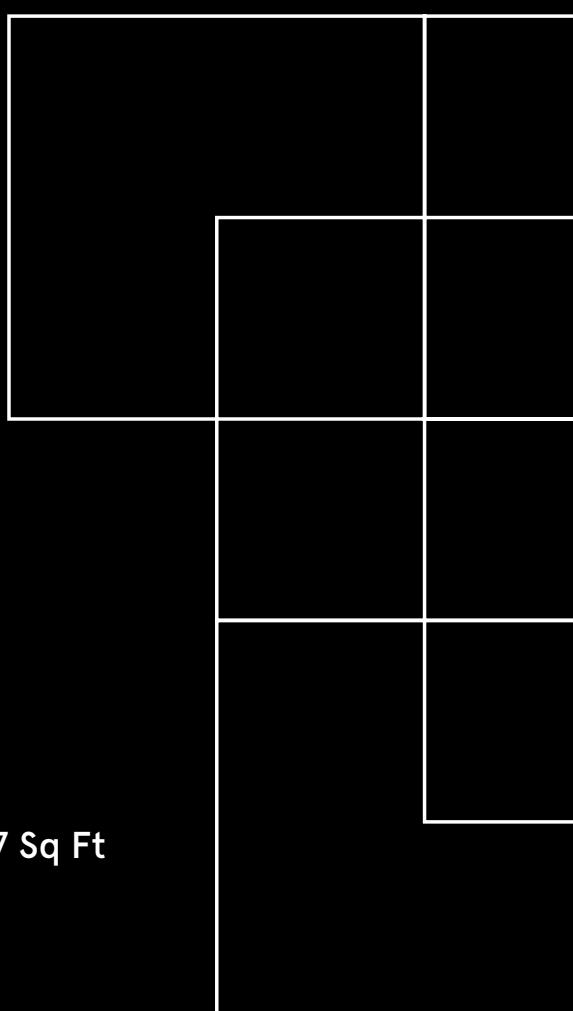


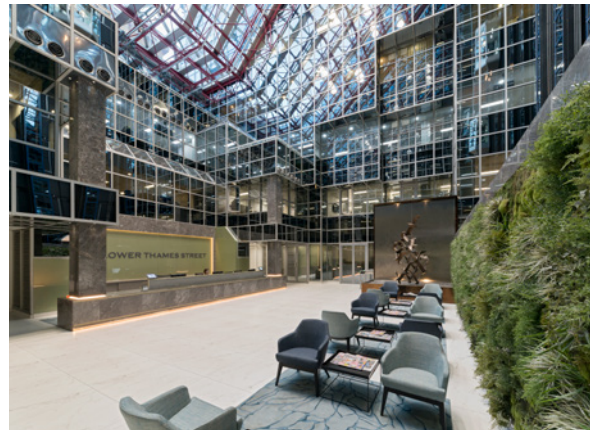
# NUMBER 10 LOWER THAMES STREET

LONDON EC3

Riverside Offices To Let - 22,367 Sq Ft



# 22,367 SQ FT OF FULLY REFURBISHED RIVERSIDE OFFICE SPACE IN A LANDMARK BUILDING



## SPECIFICATION



Refurbished reception and common parts



Ground floor café amenity



Panoramic river views



Lower ground floor gym



New LED lighting



Fully accessible raised floors



24 hour security and manned reception



Bicycle racks and shower facilities



## VIEW FROM THE FIRST FLOOR





## 1ST FLOOR PLAN

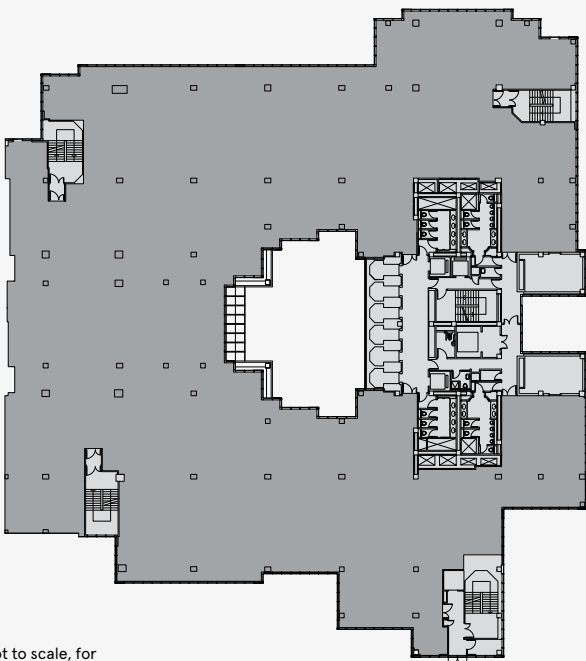
22,367 SQ FT / 2,078 SQ M

## 1ST FLOOR SPACE PLAN

22,367 SQ FT / 2,078 SQ M

Workstations	196	4 person meeting room	02
Management Offices	01	Receptionist	02
12 person meeting room	02		
8 person meeting rooms	02		
6 person meeting rooms	02	<b>Total Headcount</b>	<b>199</b>

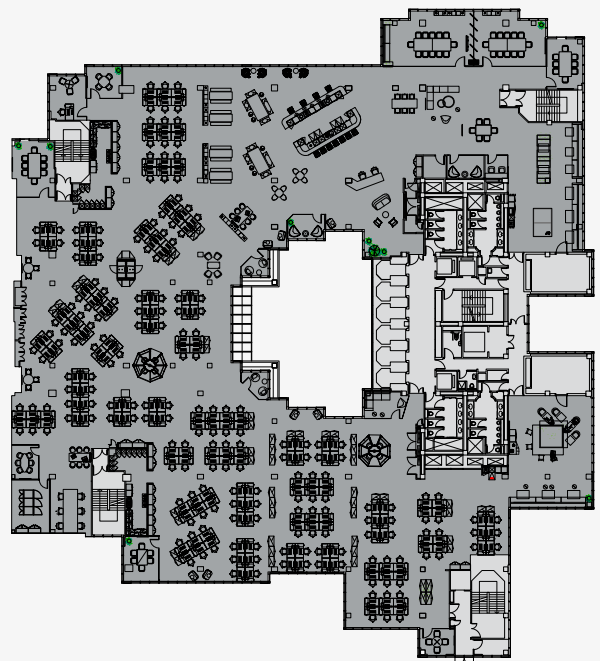
RIVER THAMES



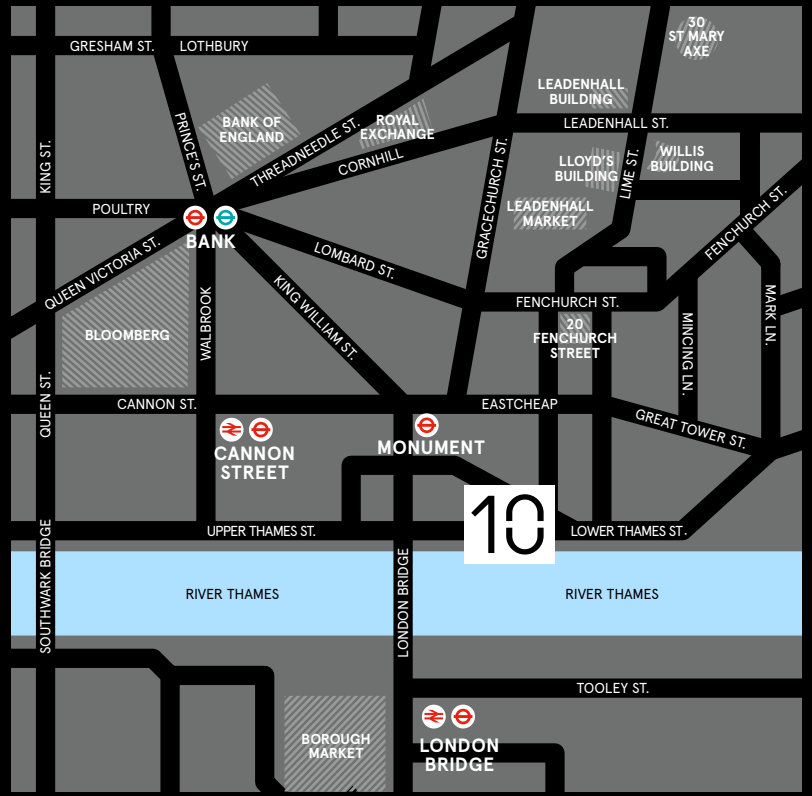
Plans not to scale, for  
indicative purposes only

LOWER THAMES STREET

RIVER THAMES




LOWER THAMES STREET



## LOCATION

Located on the bank of the River Thames close to London Bridge. The Building has excellent transport links from Monument, Cannon Street, Bank & London Bridge providing fast and frequent services across London and the south east.

**MONUMENT**




3 min walk

**CANNON STREET**




5 min walk

**BANK**



6 min walk

**LONDON BRIDGE**



9 min walk



## VIEWING

Strictly through joint sole letting agents.

Tom Fayers  
07973 821 247  
tom.fayers@cushwake.com



Jack Wells  
07741 900 431  
jw@newtonperkins.com



## TERMS

Upon application.

Andrew Parker  
07826 946 330  
andrew.parker@cushwake.com

Jon Beilin  
07976 392 016  
jb@newtonperkins.com